

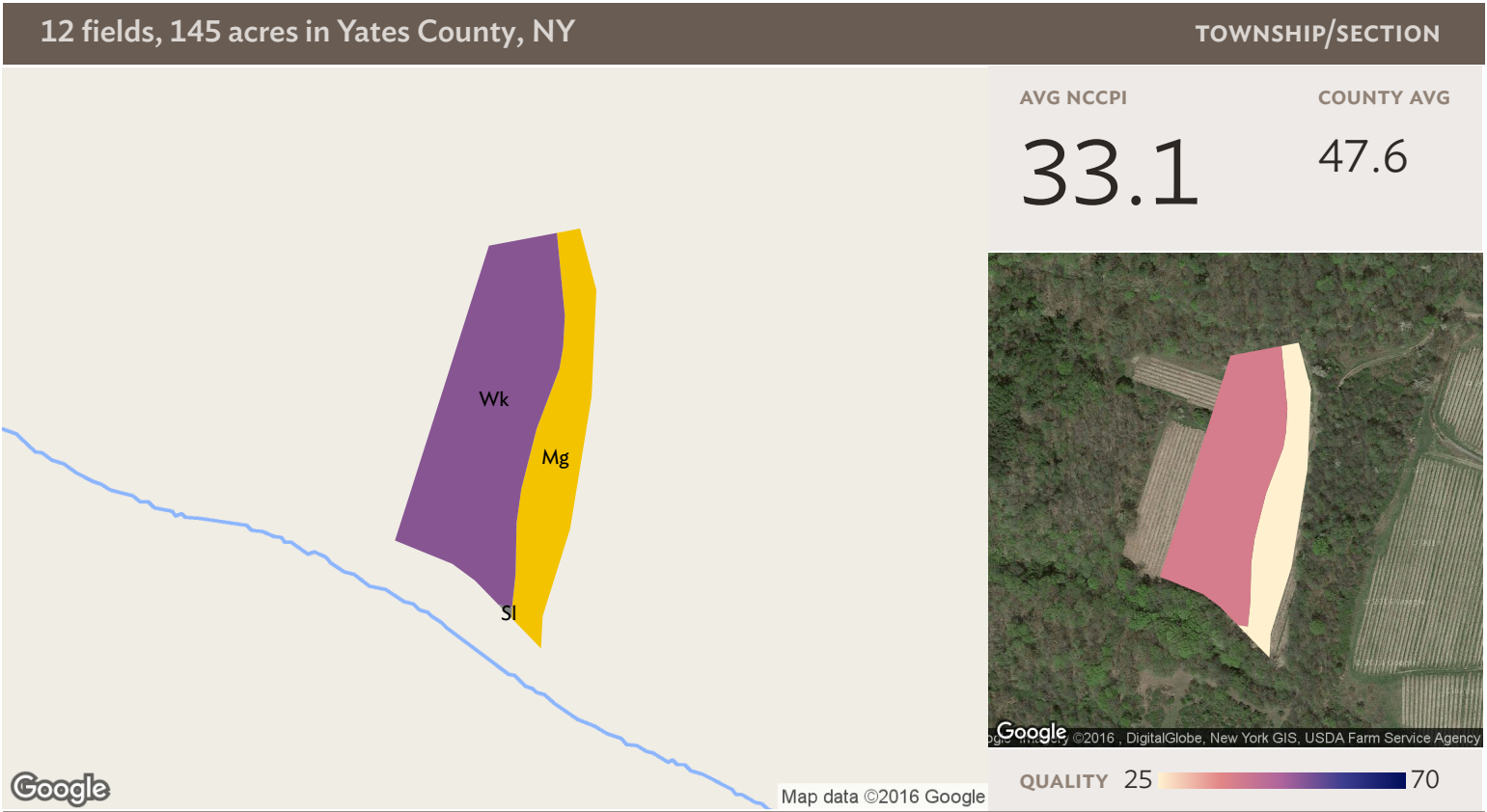
Source: NRCS Soil Survey

All fields

145 ac

SOIL CODE	SOIL DESCRIPTION	ACRES	PERCENTAGE OF FIELD	SOIL CLASS	NCCPI
Mg	Mardin channery silt loam, 8 to 15 percent slopes, eroded	42.66	29.4%	3	16.0
Wk	Woostern gravelly loam, eroded, 15 to 25 percent slopes	39.48	27.2%	4	39.0
Me	Mardin channery silt loam, 3 to 8 percent slopes	17.18	11.8%	2	33.0
We	Woostern, Bath, and Valois soils, 25 to 45 percent slopes	10.55	7.3%	7	11.0
Mf	Mardin channery silt loam, 8 to 15 percent slopes	10.03	6.9%	3	31.0
Cz	Chippewa silt loam, 3 to 8 percent slopes	7.79	5.4%	4	20.0
SI	Steep broken land, 35 to 60 percent slopes	6.55	4.5%	8	11.0
LRE	Lordstown-Arnot association, steep	3.19	2.2%	6	7.0
Cx	Chenango soils, 25 to 45 percent slopes	2.76	1.9%	7	11.0

12 fields, 145 acres in Yates County, NY				TOWNSHIP/SECTION	
■ Cw	Chenango soils, 15 to 25 percent slopes	2.64	1.8%	4	40.0
■ Ch	Chenango channery silt loam, fan	1.24	0.9%	2	41.0
■ MdC	Mardin channery silt loam, 8 to 15 percent slopes	1.07	0.7%	3	31.0
145.15				25.4	

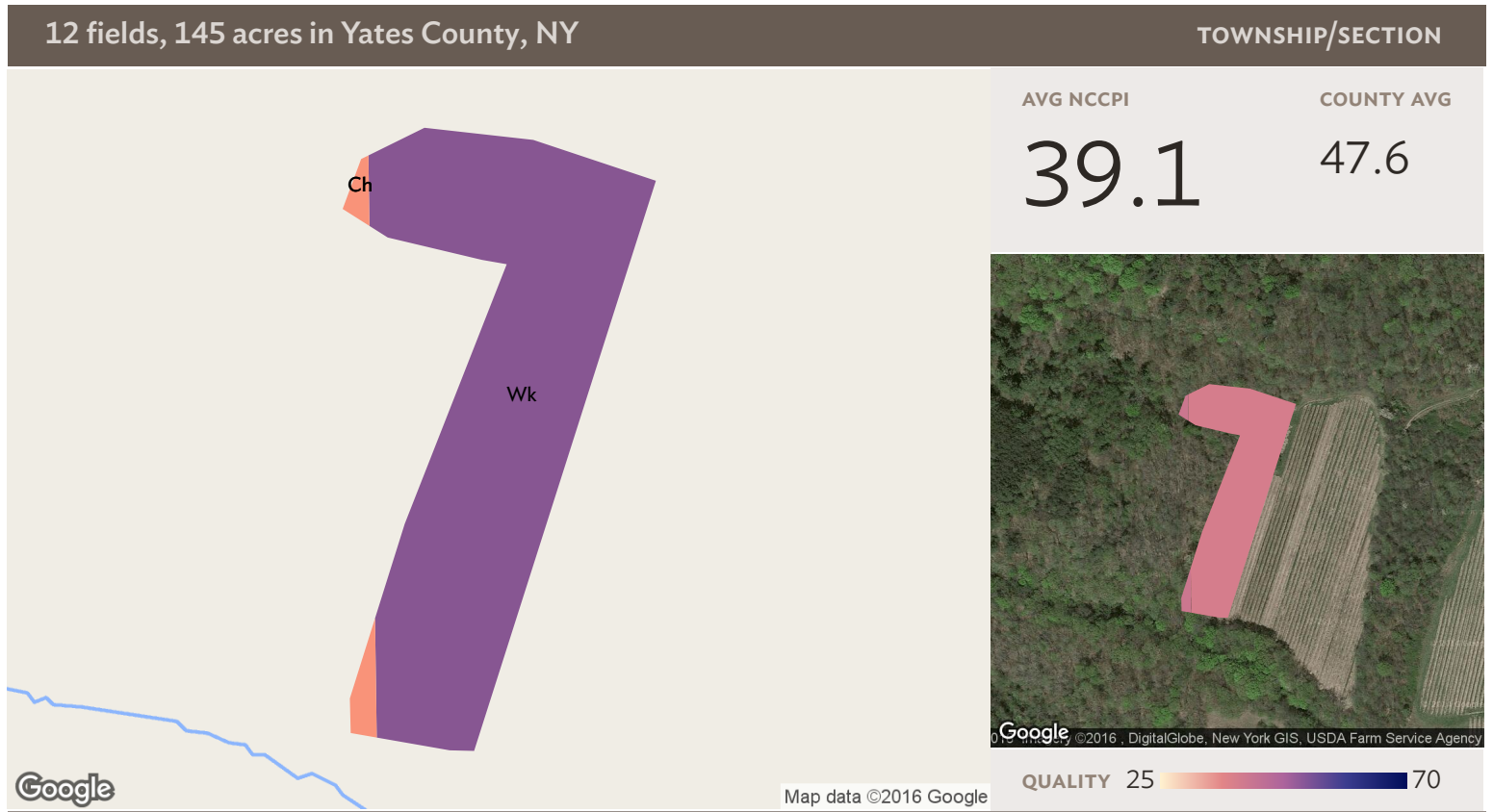


Field 1

Source: NRCS Soil Survey

3 ac

SOIL CODE	SOIL DESCRIPTION	ACRES	PERCENTAGE OF FIELD	SOIL CLASS	NCCPI
Wk	Woostern gravelly loam, eroded, 15 to 25 percent slopes	2.45	74.2%	4	39.0
Mg	Mardin channery silt loam, 8 to 15 percent slopes, eroded	0.85	25.8%	3	16.0
		3.30			33.1

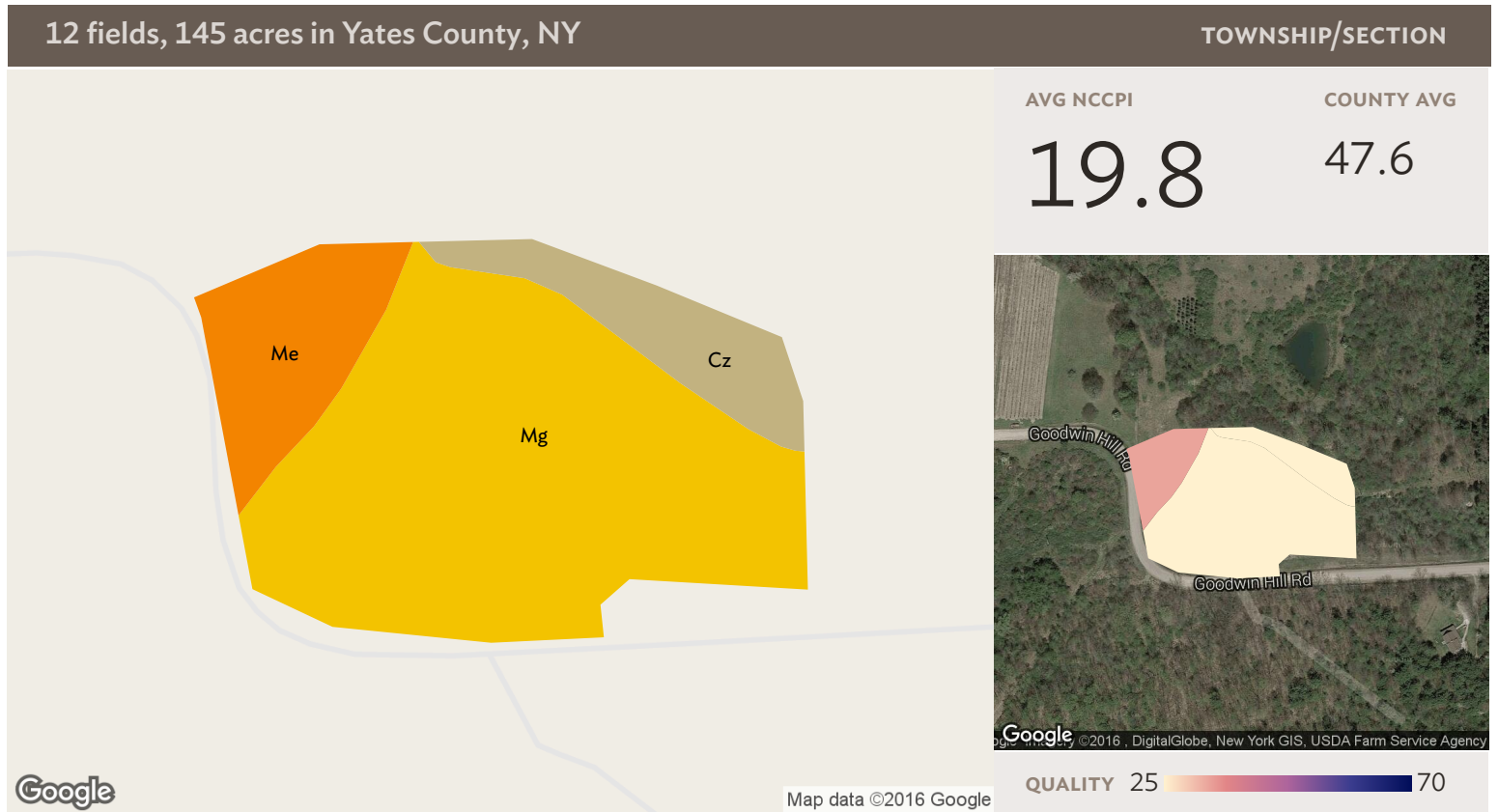


Field 2

Source: NRCS Soil Survey

2 ac

SOIL CODE	SOIL DESCRIPTION	ACRES	PERCENTAGE OF FIELD	SOIL CLASS	NCCPI
■ Wk	Woostern gravelly loam, eroded, 15 to 25 percent slopes	1.52	96.1%	4	39.0
■ Ch	Chenango channery silt loam, fan	0.06	3.9%	2	41.0
					39.1
					1.58

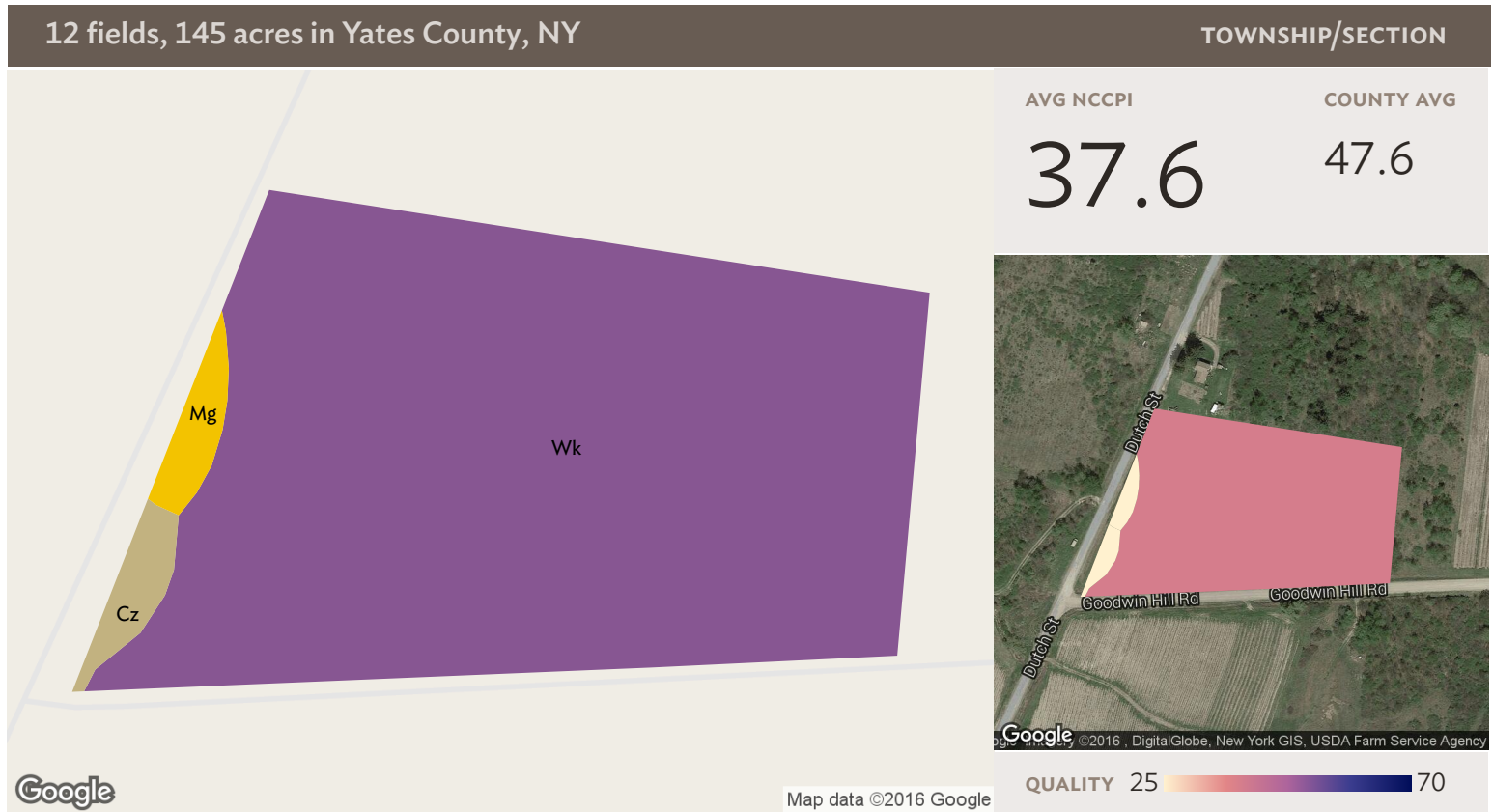


Source: NRCS Soil Survey

Field 3

3 ac

SOIL CODE	SOIL DESCRIPTION	ACRES	PERCENTAGE OF FIELD	SOIL CLASS	NCCPI
■ Mg	Mardin channery silt loam, 8 to 15 percent slopes, eroded	2.18	67.5%	3	16.0
■ Me	Mardin channery silt loam, 3 to 8 percent slopes	0.63	19.5%	2	33.0
■ Cz	Chippewa silt loam, 3 to 8 percent slopes	0.42	13.1%	4	20.0
3.23					19.8

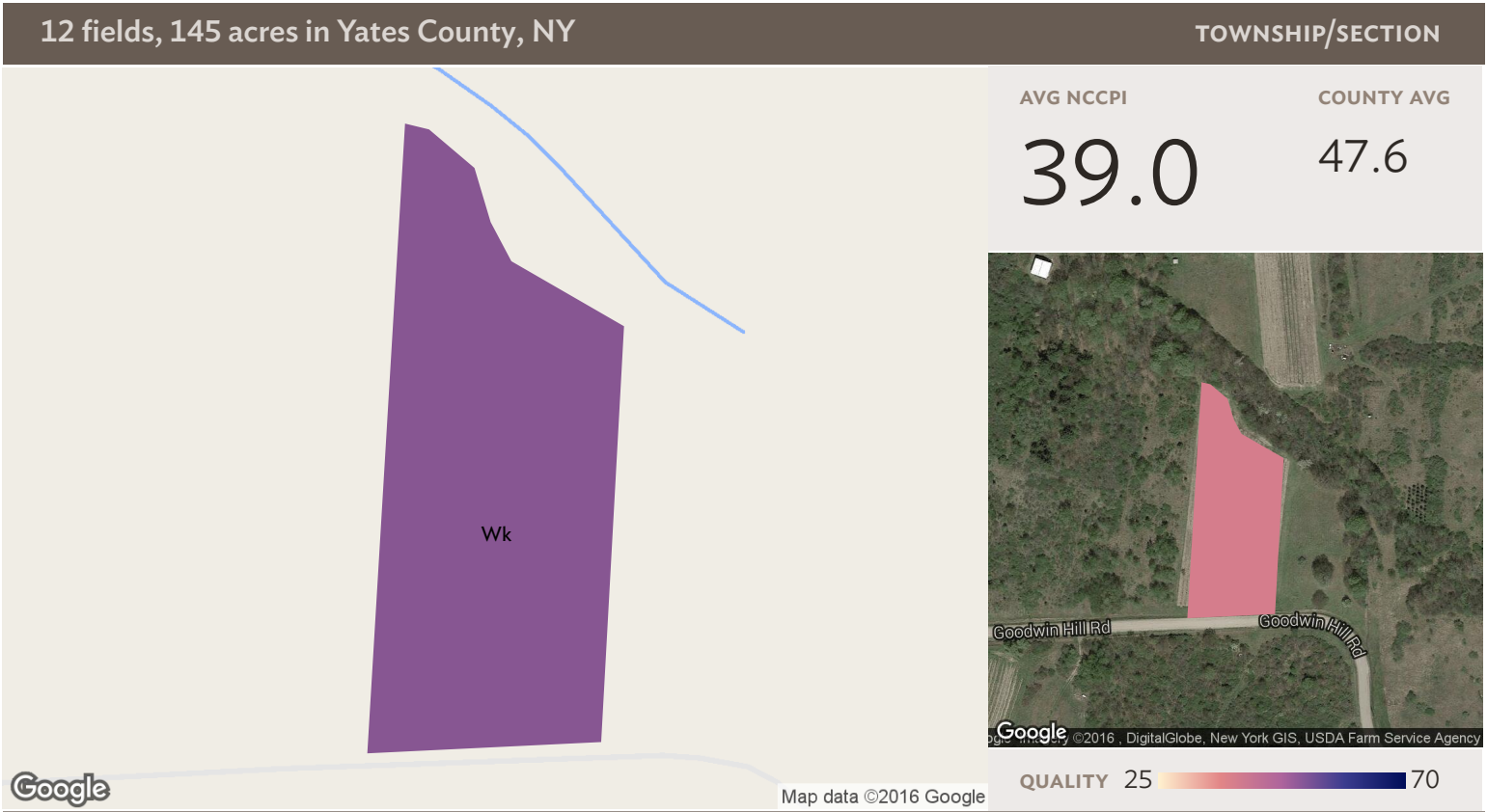


Field 4

Source: NRCS Soil Survey

5 ac

SOIL CODE	SOIL DESCRIPTION	ACRES	PERCENTAGE OF FIELD	SOIL CLASS	NCCPI
■ Wk	Woostern gravelly loam, eroded, 15 to 25 percent slopes	4.93	93.1%	4	39.0
■ Cz	Chippewa silt loam, 3 to 8 percent slopes	0.21	4.0%	4	20.0
■ Mg	Mardin channery silt loam, 8 to 15 percent slopes, eroded	0.15	2.9%	3	16.0
		5.29			37.6

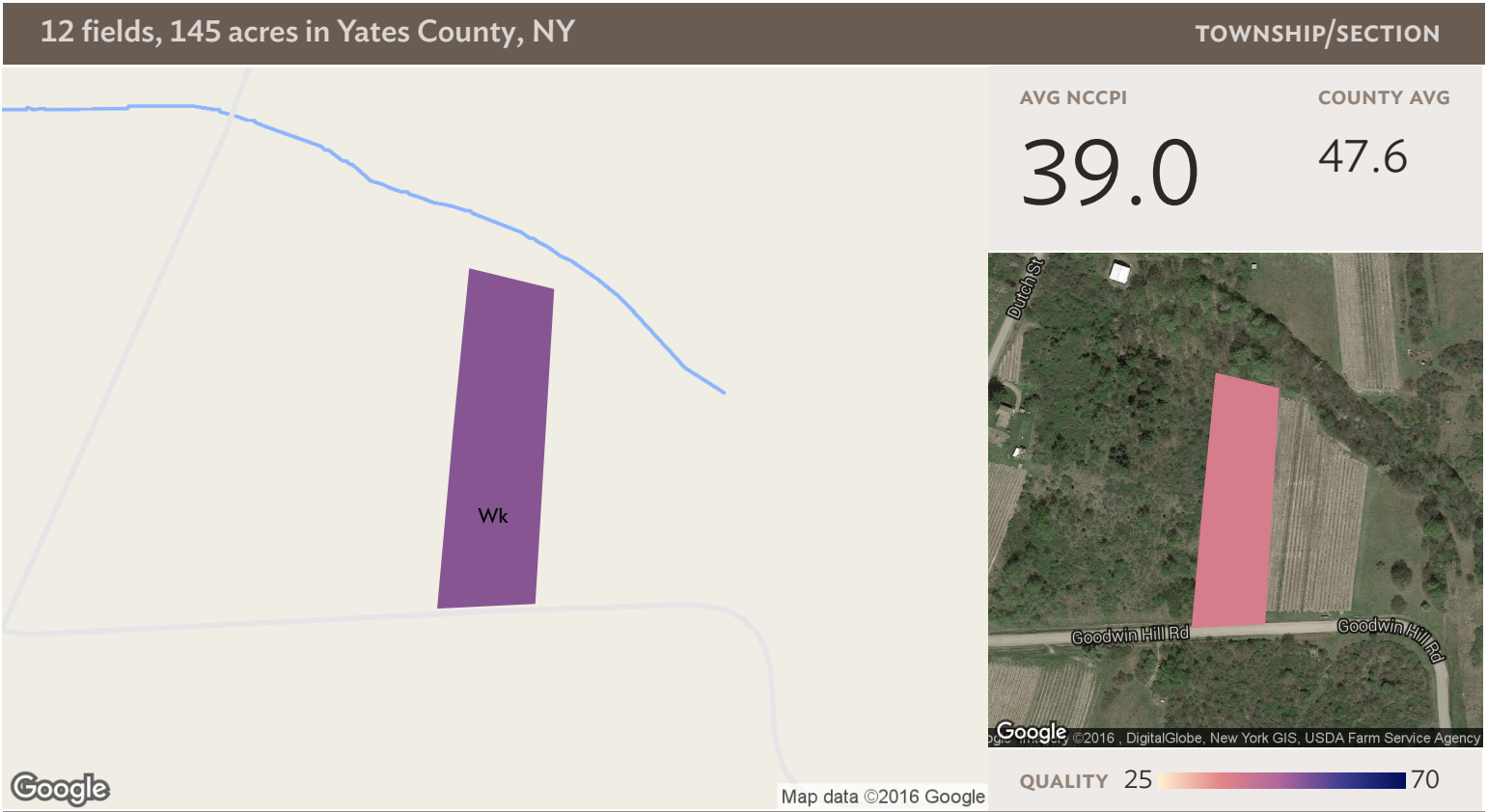


Field 5

Source: NRCS Soil Survey

2 ac

SOIL CODE	SOIL DESCRIPTION	ACRES	PERCENTAGE OF FIELD	SOIL CLASS	NCCPI
Wk	Woostern gravelly loam, eroded, 15 to 25 percent slopes	1.94	100.0%	4	39.0
		1.94			39.0

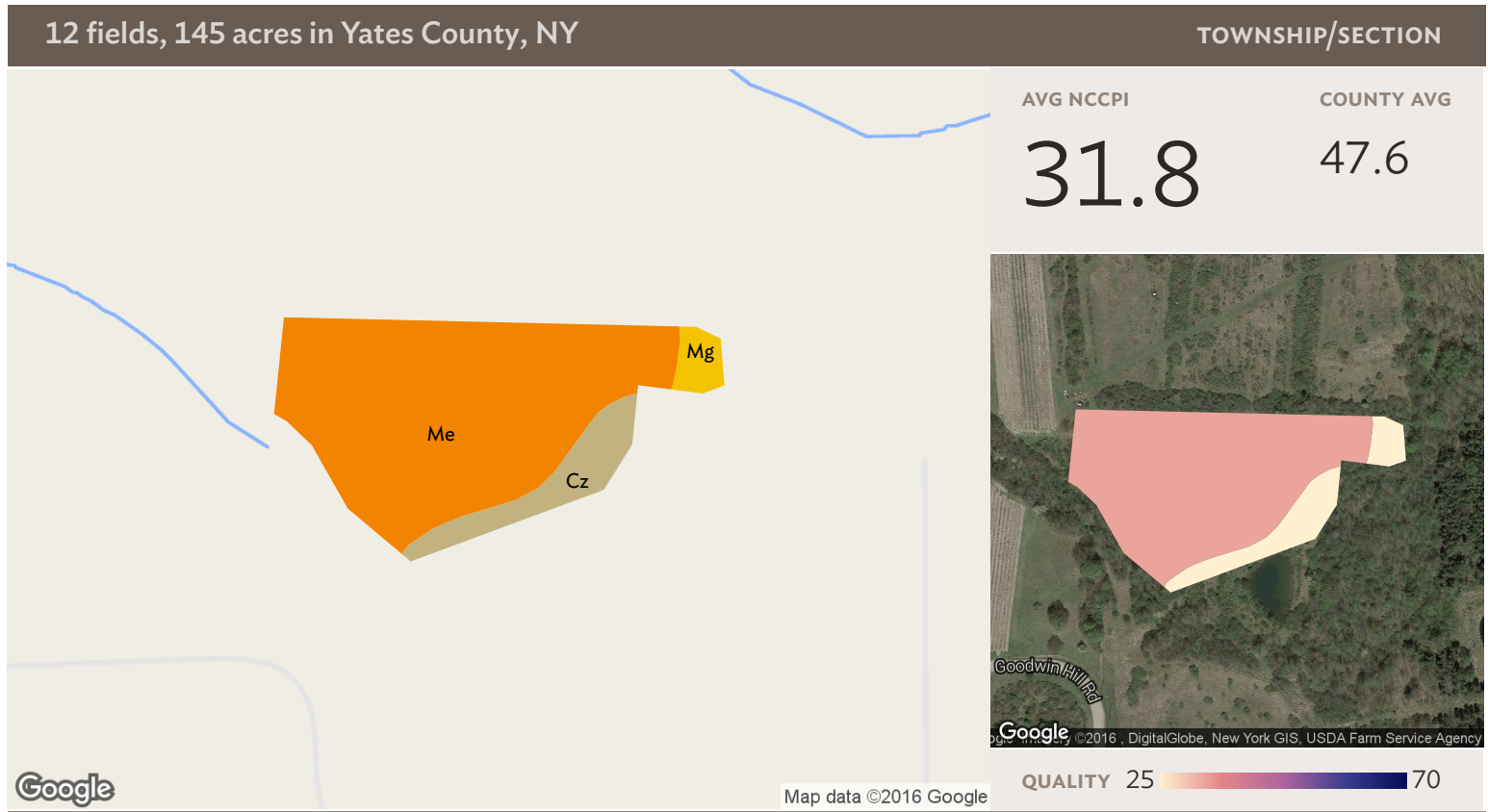


Field 6

Source: NRCS Soil Survey

2 ac

SOIL CODE	SOIL DESCRIPTION	ACRES	PERCENTAGE OF FIELD	SOIL CLASS	NCCPI
■ Wk	Woostern gravelly loam, eroded, 15 to 25 percent slopes	1.98	100.0%	4	39.0
		1.98			39.0

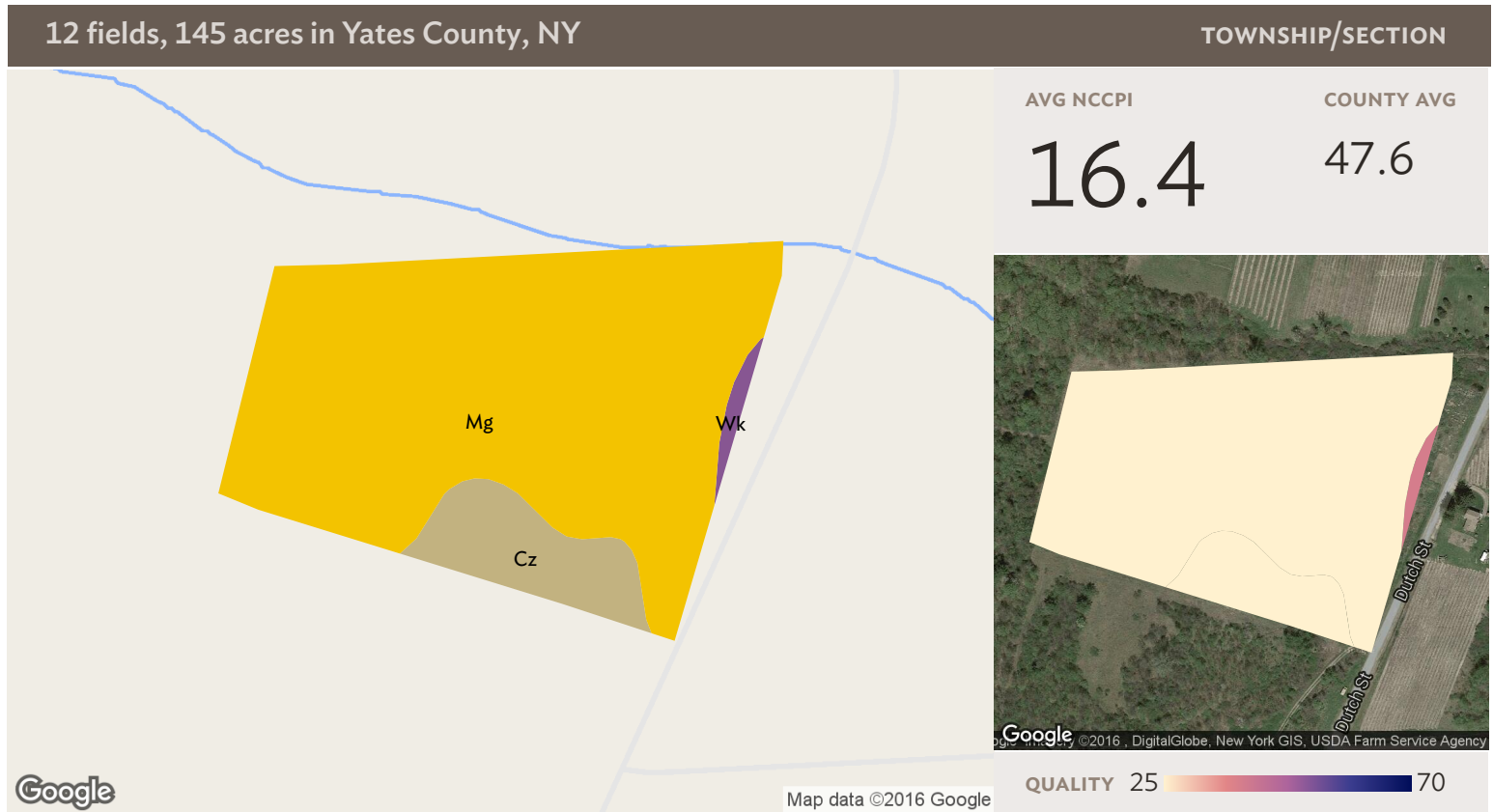


Field 7

Source: NRCS Soil Survey

5 ac

SOIL CODE	SOIL DESCRIPTION	ACRES	PERCENTAGE OF FIELD	SOIL CLASS	NCCPI
Me	Mardin channery silt loam, 3 to 8 percent slopes	4.33	92.1%	2	33.0
Cz	Chippewa silt loam, 3 to 8 percent slopes	0.21	4.4%	4	20.0
Mg	Mardin channery silt loam, 8 to 15 percent slopes, eroded	0.17	3.5%	3	16.0
		4.70			31.8

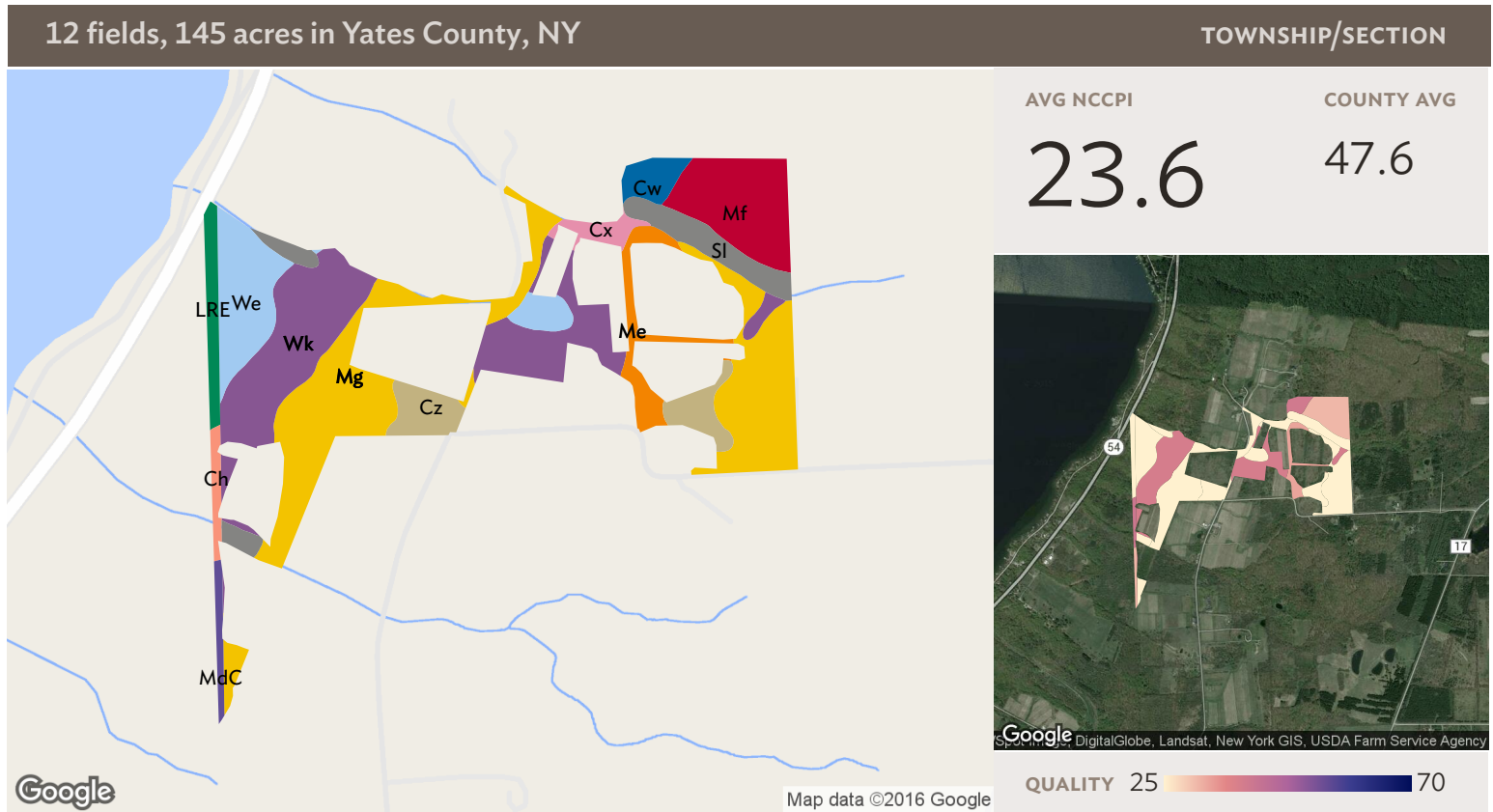


Field 8

Source: NRCS Soil Survey

10 ac

SOIL CODE	SOIL DESCRIPTION	ACRES	PERCENTAGE OF FIELD	SOIL CLASS	NCCPI
Mg	Mardin channery silt loam, 8 to 15 percent slopes, eroded	9.26	90.2%	3	16.0
Cz	Chippewa silt loam, 3 to 8 percent slopes	0.97	9.5%	4	20.0
Wk	Woostern gravelly loam, eroded, 15 to 25 percent slopes	0.03	0.3%	4	39.0
		10.26			16.4



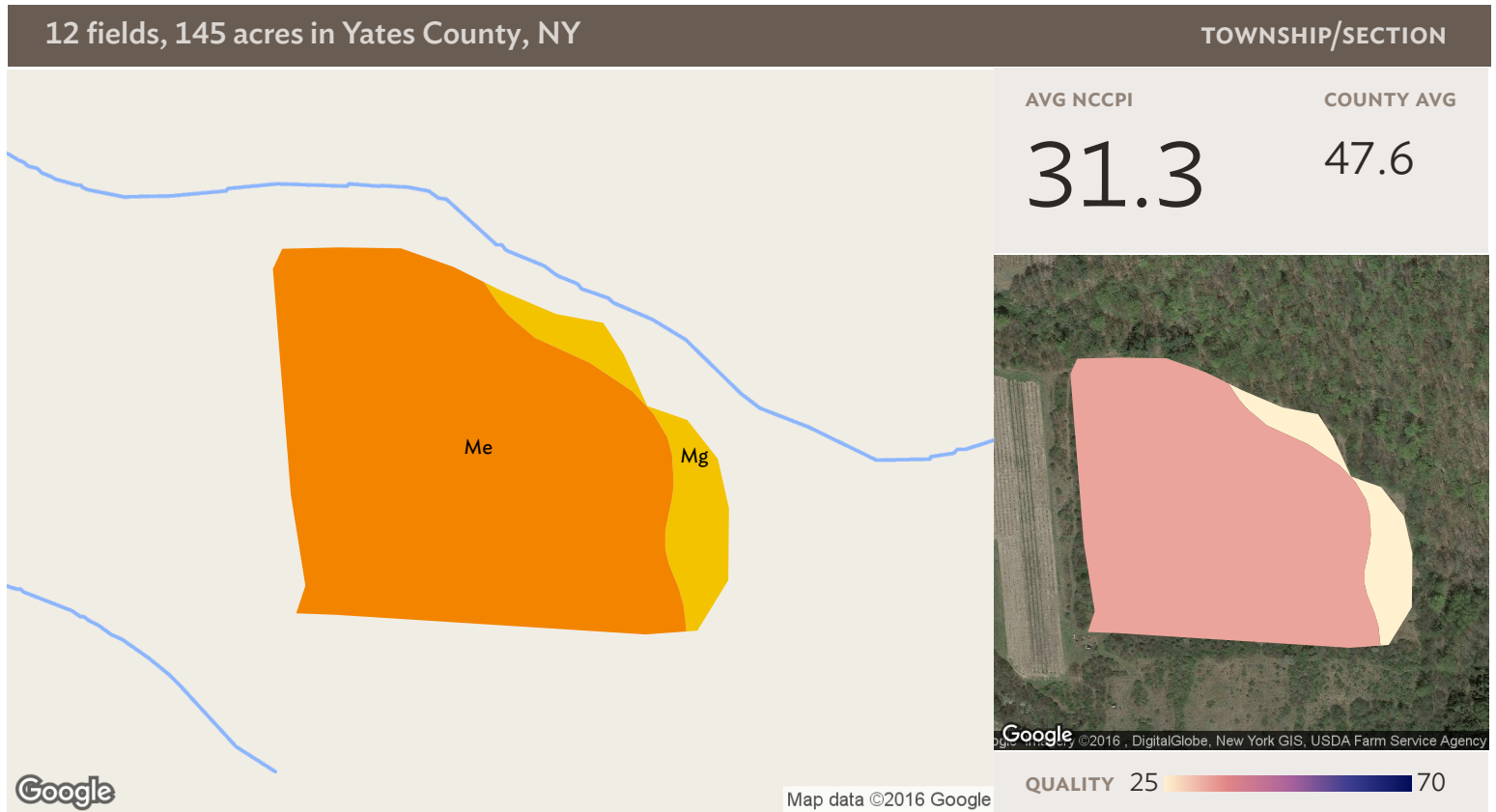
Field 9

Source: NRCS Soil Survey

98 ac

SOIL CODE	SOIL DESCRIPTION	ACRES	PERCENTAGE OF FIELD	SOIL CLASS	NCCPI
Mg	Mardin channery silt loam, 8 to 15 percent slopes, eroded	29.18	29.7%	3	16.0
Wk	Woostern gravelly loam, eroded, 15 to 25 percent slopes	23.06	23.4%	4	39.0
We	Woostern, Bath, and Valois soils, 25 to 45 percent slopes	10.53	10.7%	7	11.0
Mf	Mardin channery silt loam, 8 to 15 percent slopes	10.03	10.2%	3	31.0
SI	Steep broken land, 35 to 60 percent slopes	6.55	6.7%	8	11.0
Cz	Chippewa silt loam, 3 to 8 percent slopes	5.98	6.1%	4	20.0
Me	Mardin channery silt loam, 3 to 8 percent slopes	3.43	3.5%	2	33.0
LRE	Lordstown-Arnot association, steep	3.19	3.2%	6	7.0
Cw	Chenango soils, 15 to 25 percent slopes	2.64	2.7%	4	40.0

12 fields, 145 acres in Yates County, NY				TOWNSHIP/SECTION	
■ Cx	Chenango soils, 25 to 45 percent slopes	1.49	1.5%	7	11.0
■ Ch	Chenango channery silt loam, fan	1.18	1.2%	2	41.0
■ MdC	Mardin channery silt loam, 8 to 15 percent slopes	1.07	1.1%	3	31.0
98.34				23.6	

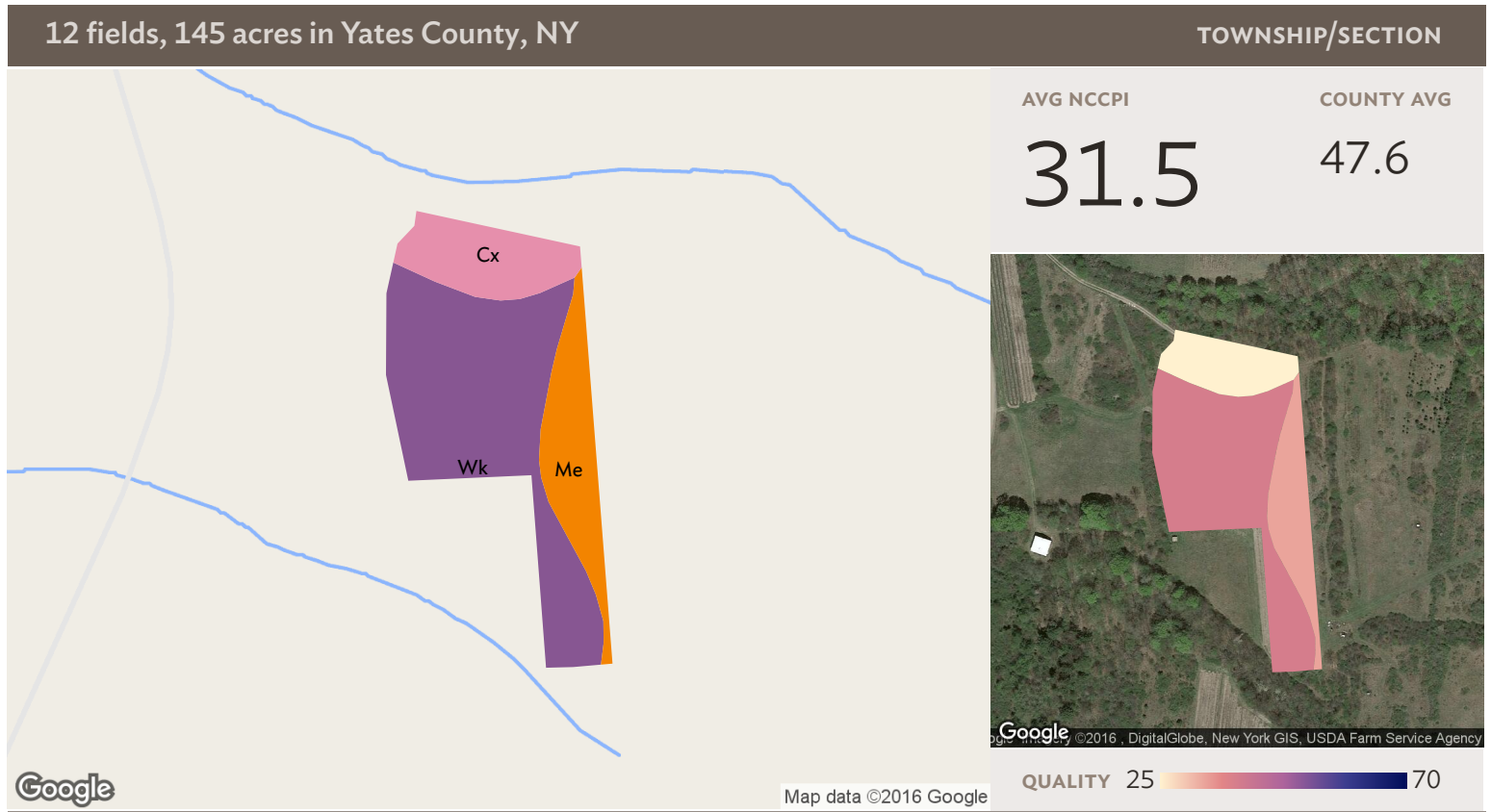


Field 10

Source: NRCS Soil Survey

9 ac

SOIL CODE	SOIL DESCRIPTION	ACRES	PERCENTAGE OF FIELD	SOIL CLASS	NCCPI
■ Me	Mardin channery silt loam, 3 to 8 percent slopes	8.05	90.2%	2	33.0
■ Mg	Mardin channery silt loam, 8 to 15 percent slopes, eroded	0.87	9.8%	3	16.0
		8.92			31.3

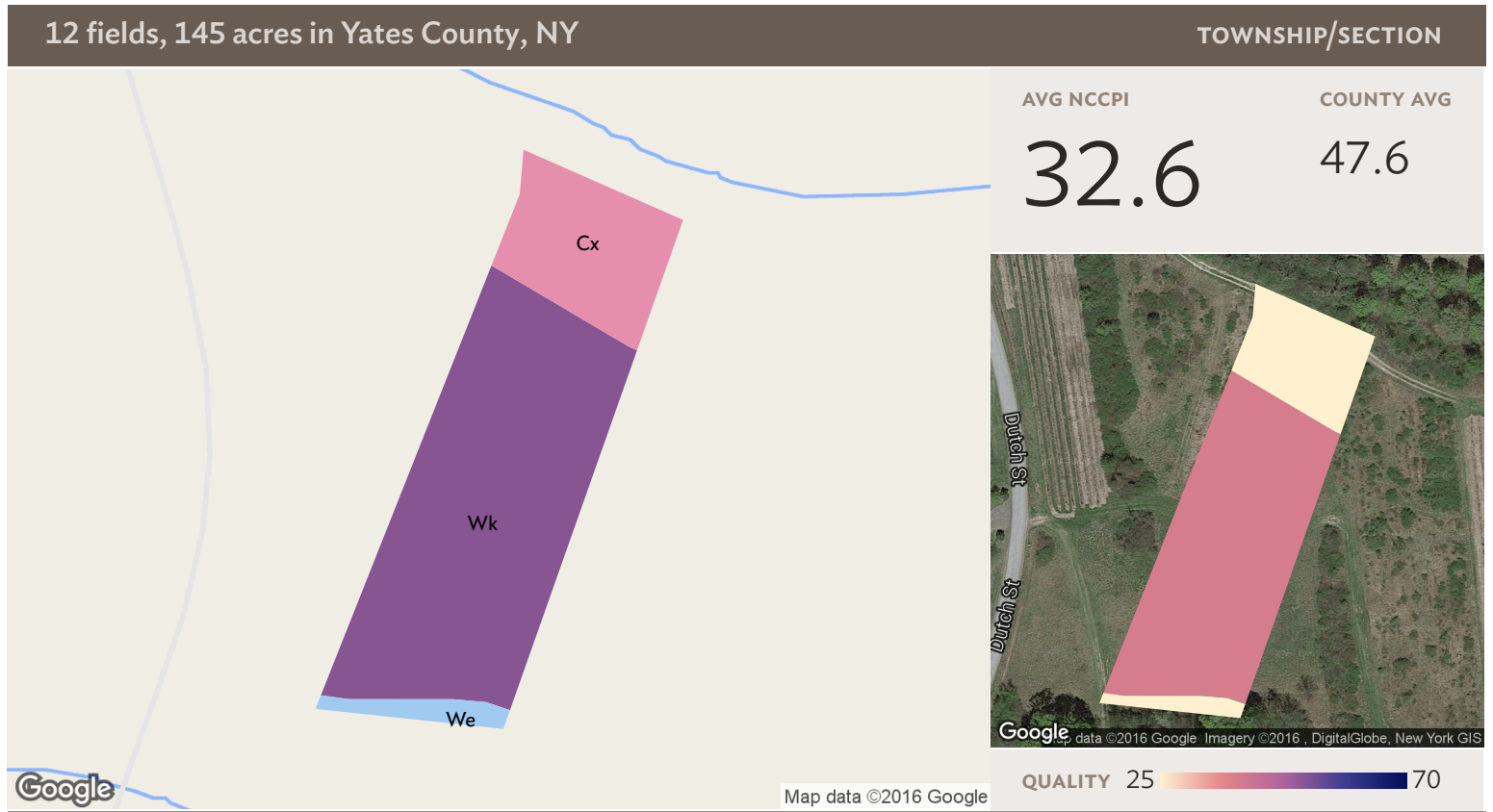


Field 11

Source: NRCS Soil Survey

4 ac

SOIL CODE	SOIL DESCRIPTION	ACRES	PERCENTAGE OF FIELD	SOIL CLASS	NCCPI
Wk	Woostern gravelly loam, eroded, 15 to 25 percent slopes	2.36	58.8%	4	39.0
Cx	Chenango soils, 25 to 45 percent slopes	0.91	22.8%	7	11.0
Me	Mardin channery silt loam, 3 to 8 percent slopes	0.74	18.4%	2	33.0
		4.01			31.5



Field 12

Source: NRCS Soil Survey

2 ac

SOIL CODE	SOIL DESCRIPTION	ACRES	PERCENTAGE OF FIELD	SOIL CLASS	NCCPI
Wk	Woostern gravelly loam, eroded, 15 to 25 percent slopes	1.23	77.0%	4	39.0
Cx	Chenango soils, 25 to 45 percent slopes	0.36	22.3%	7	11.0
We	Woostern, Bath, and Valois soils, 25 to 45 percent slopes	0.01	0.8%	7	11.0
1.60					32.6

12

1

10

8

4

6

7

3

9

2

5

Google

©2016, DigitalGlobe, Landsat, New York GIS, USDA Farm Service Agency

12

1

10

8

4

6

7

3

9

2

5

Google

©2016, DigitalGlobe, Landsat, New York GIS, USDA Farm Service Agency

12

1

10

8

4

6

7

3

9

2

5

Google

©2016, DigitalGlobe, Landsat, New York GIS, USDA Farm Service Agency

12

1

10

8

4

6

7

3

9

2

5

Google

©2016, DigitalGlobe, Landsat, New York GIS, USDA Farm Service Agency

12

1

10

8

4

6

7

3

9

2

5

Google

©2016, DigitalGlobe, Landsat, New York GIS, USDA Farm Service Agency

12

1

10

8

4

6

7

3

9

2

5

Google

©2016, DigitalGlobe, Landsat, New York GIS, USDA Farm Service Agency

12

1

10

8

4

6

7

3

9

2

5

Google

©2016, DigitalGlobe, Landsat, New York GIS, USDA Farm Service Agency

12

1

10

8

4

6

7

3

9

2

5

Google

©2016, DigitalGlobe, Landsat, New York GIS, USDA Farm Service Agency

12

1

10

8

4

6

7

3

9

2

5

Google

©2016, DigitalGlobe, Landsat, New York GIS, USDA Farm Service Agency

12

1

10

8

4

6

7

3

9

2

5

Google

©2016, DigitalGlobe, Landsat, New York GIS, USDA Farm Service Agency

12

1

10

8

4

6

7

3

9

2

5

Google

©2016, DigitalGlobe, Landsat, New York GIS, USDA Farm Service Agency

12

1

10

8

4

6

7

3

9

2

5

Google

©2016, DigitalGlobe, Landsat, New York GIS, USDA Farm Service Agency

12

1

10

8

4

6

7

3

9

2

5

Google

©2016, DigitalGlobe, Landsat, New York GIS, USDA Farm Service Agency

12

1

10

8

4

6

7

3

9

2

5

Google

©2016, DigitalGlobe, Landsat, New York GIS, USDA Farm Service Agency

12

1

10

8

4

6

7

3

9

2

5

Google

©2016, DigitalGlobe, Landsat, New York GIS, USDA Farm Service Agency

12

1

10

8

4

6

7

3

9

2

5

Google

©2016, DigitalGlobe, Landsat, New York GIS, USDA Farm Service Agency

12

1

10

8

4

6

7

3

9

2

5

Google

©2016, DigitalGlobe, Landsat, New York GIS, USDA Farm Service Agency

12

1

10

8

4

6

7

3

9

2

5

Google

©2016, DigitalGlobe, Landsat, New York GIS, USDA Farm Service Agency

12

1

10

8

4

6

7

3

9

2

5

Google

©2016, DigitalGlobe, Landsat, New York GIS, USDA Farm Service Agency

12

1

10

8

4

6

7

3

9

2

5

Google

©2016, DigitalGlobe, Landsat, New York GIS, USDA Farm Service Agency

12

1

10

8

4

6

7

3

9

2

5

Google

©2016, DigitalGlobe, Landsat, New York GIS, USDA Farm Service Agency

12

1

10

8

4

6

7

3

9

2

5

Google

©2016, DigitalGlobe, Landsat, New York GIS, USDA Farm Service Agency

12

1

10

8

4

6

7

3

9

2

5

Google

©2016, DigitalGlobe, Landsat, New York GIS, USDA Farm Service Agency

12

1

10

8

4

6

7

3

9

2

5

Google

©2016, DigitalGlobe, Landsat, New York GIS, USDA Farm Service Agency

12

1

10

8

4

6

7

3

9

2

5

Google

©2016, DigitalGlobe, Landsat, New York GIS, USDA Farm Service Agency

12

1

10

8

4

6

7

3

9

2

5

Google

©2016, DigitalGlobe, Landsat, New York GIS, USDA Farm Service Agency

12

1

10

8

4

6

7

3

9

2

5

Google

©2016, DigitalGlobe, Landsat, New York GIS, USDA Farm Service Agency

12

1

10

8

4

6

7

3

9

2

5

Google

©2016, DigitalGlobe, Landsat, New York GIS, USDA Farm Service Agency

12

1

10

8

4

6

7

3

9

2

5

Google

©2016, DigitalGlobe, Landsat, New York GIS, USDA Farm Service Agency

12

1

10

8

4

6

7

3

9

2

5

Google

©2016, DigitalGlobe, Landsat, New York GIS, USDA Farm Service Agency

12

1

10

8

4

6

7

3

9

2

5

Google

©2016, DigitalGlobe, Landsat, New York GIS, USDA Farm Service Agency

12

1

10

8

4

6

7

3

9

2

5

Google

©2016, DigitalGlobe, Landsat, New York GIS, USDA Farm Service Agency

12

1

10

8

4

6

7

3

9

2

5

Google

©2016, DigitalGlobe, Landsat, New York GIS, USDA Farm Service Agency

12

1

10

8

4

6

7

3

9

2

5

Google

©2016, DigitalGlobe, Landsat, New York GIS, USDA Farm Service Agency

12

1

10

8

4

6

7

3

9

2

5

Google

©2016, DigitalGlobe, Landsat, New York GIS, USDA Farm Service Agency

12

1

10

8

4

6

7

3

9

2

5

Google

©2016, DigitalGlobe, Landsat, New York GIS, USDA Farm Service Agency

12

1

10

8

4

6

7

3

9

2

5

Google

©2016, DigitalGlobe, Landsat, New York GIS, USDA Farm Service Agency

12

1

10

8

4

6

7

3

9

2

5

Google

©2016, DigitalGlobe, Landsat, New York GIS, USDA Farm Service Agency

12

1

10

8

4

6

7

3

9

2

5

Google

©2016, DigitalGlobe, Landsat, New York GIS, USDA Farm Service Agency

12

1

10

8

4

6

7

3

9

2

5

Google

©2016, DigitalGlobe, Landsat, New York GIS, USDA Farm Service Agency

12

1

10

8

4

6

7

3

9

2

5

Google

©2016, DigitalGlobe, Landsat, New York GIS, USDA Farm Service Agency

12

1

10

8

4

6

7

3

9

2

5

Google

©2016, DigitalGlobe, Landsat, New York GIS, USDA Farm Service Agency

12

1

10

8

4

6

7

3

9

2

5

Google

©2016, DigitalGlobe, Landsat, New York GIS, USDA Farm Service Agency

12

1

10

8

4

6

7

3

9

2

5

Google

©2016, DigitalGlobe, Landsat, New York GIS, USDA Farm Service Agency

12

1

10

8

4

6

7

3

9

2

5

Google

©2016, DigitalGlobe, Landsat, New York GIS, USDA Farm Service Agency

12

1

10

8

4

6

7

3

9

2

5

Google

©2016, DigitalGlobe, Landsat, New York GIS, USDA Farm Service Agency

12

1

10

8

4

6

7

3

9

2

5

Google

©2016, DigitalGlobe, Landsat, New York GIS, USDA Farm Service Agency

12

1

10

8

4

6

7

3

9

2

5

Google

©2016, DigitalGlobe, Landsat, New York GIS, USDA Farm Service Agency

12

1

10

8

4

6

7

3

9

2

5

Google

©2016, DigitalGlobe, Landsat, New York GIS, USDA Farm Service Agency

12

1

10

8

4

6

7

3

9

2

5

Google

©2016, DigitalGlobe, Landsat, New York GIS, USDA Farm Service Agency

12

1

10

8

4

6

7

3

9

2

5

Google

©2016, DigitalGlobe, Landsat, New York GIS, USDA Farm Service Agency

12

1

10

8

4

6

7

3

9

2

5

Google

©2016, DigitalGlobe, Landsat, New York GIS, USDA Farm Service Agency

12

1

10

8

4

6

7

3

9

2

5

Google

©2016, DigitalGlobe, Landsat, New York GIS, USDA Farm Service Agency

12

1

10

8

4

6

7

3

9

2

5

Google

©2016, DigitalGlobe, Landsat, New York GIS, USDA Farm Service Agency

12

1

10

8

4

6

7

3

9

2

5

Google

©2016, DigitalGlobe, Landsat, New York GIS, USDA Farm Service Agency

12

1

10

8

4

6

7

3

9

2

5

Google

©2016, DigitalGlobe, Landsat, New York GIS, USDA Farm Service Agency

12

1

10

8

4

6

7

3

9

2

5

Google

©2016, DigitalGlobe, Landsat, New York GIS, USDA Farm Service Agency

12

1

10

8

4

6

7

3

9

2

5

Google

©2016, DigitalGlobe, Landsat, New York GIS, USDA Farm Service Agency

12

1

10

8

4

6

7

3

9

2

5

Google

©2016, DigitalGlobe, Landsat, New York GIS, USDA Farm Service Agency

12

1

10

8

4

6

7

3

9

2

5

Google

©2016, DigitalGlobe, Landsat, New York GIS, USDA Farm Service Agency

12

1

10

8

4

6

7

3

9

2

5

Google

©2016, DigitalGlobe, Landsat, New York GIS, USDA Farm Service Agency

12

1

10

8

4

6

7

3

9

2

5

Google

©2016, DigitalGlobe, Landsat, New York GIS, USDA Farm Service Agency

12

1

10

8

4

6

7

3

9

2

5

Google

©2016, DigitalGlobe, Landsat, New York GIS, USDA Farm Service Agency

12

1

10

8

4

6

7

3

9

2

5

Google

©2016, DigitalGlobe, Landsat, New York GIS, USDA Farm Service Agency

12

1

10

8

4

6

7

3

9

2

5

Google

©2016, DigitalGlobe, Landsat, New York GIS, USDA Farm Service Agency

12

1

10

8

4

6

7

3

9

2

5

Google

©2016, DigitalGlobe, Landsat, New York GIS, USDA Farm Service Agency

12

1

10

8

4

6

7

3

9

2

5

Google

©2016, DigitalGlobe, Landsat, New York GIS, USDA Farm Service Agency

12

1

10

8

4

6

7

3

9

2

5

Google

©2016, DigitalGlobe, Landsat, New York GIS, USDA Farm Service Agency

12

1

10

8

4

6

7

3

9

2

5

Google

©2016, DigitalGlobe, Landsat, New York GIS, USDA Farm Service Agency

12

1

10

8

4

6

7

3

9

2

5

Google

©2016, DigitalGlobe, Landsat, New York GIS, USDA Farm Service Agency

12

1

10

8

4

6

7

3

9

2

5

Google

©2016, DigitalGlobe, Landsat, New York GIS, USDA Farm Service Agency

</

12 fields, 145 acres in Yates County, NY

TOWNSHIP/SECTION



Field 3

3 ac



2014 2013 2012 2011 2010

Non-Agricultural	80.0%	80.0%	81.7%	80.0%	80.0%
Grass/Pasture	20.0%	20.0%	18.3%	20.0%	10.9%
Fallow	–	–	–	–	9.1%



Field 4

5 ac

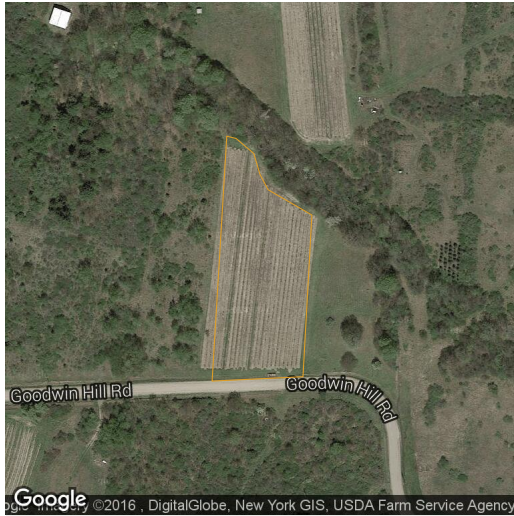


2014 2013 2012 2011 2010

Non-Agricultural	41.1%	45.2%	67.3%	62.9%	60.4%
Grass/Pasture	47.0%	54.8%	20.9%	19.9%	22.7%
Fallow	8.4%	–	–	12.1%	16.8%
Corn	–	–	11.8%	–	–
Other	3.4%	–	–	5.0%	–

12 fields, 145 acres in Yates County, NY

TOWNSHIP/SECTION



Field 5

2 ac



2014



2013



2012

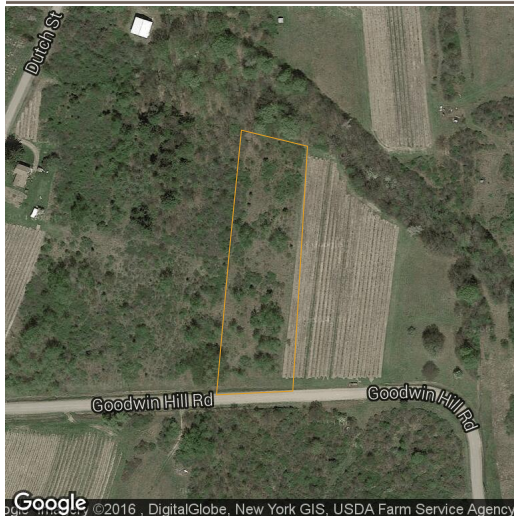


2011



2010

Grass/Pasture	98.2%	98.2%	52.3%	24.3%	51.4%
Non-Agricultural	1.8%	1.8%	35.1%	39.6%	30.6%
Fallow	-	-	12.6%	-	18.0%
Alfalfa	-	-	-	27.0%	-
Grapes	-	-	-	9.0%	-



Field 6

2 ac



2014



2013



2012



2011



2010

Non-Agricultural	47.4%	47.4%	100.0%	75.8%	52.6%
Grass/Pasture	52.6%	52.6%	-	24.2%	47.4%



Field 7

5 ac



2014



2013



2012



2011



2010

Non-Agricultural	62.9%	59.6%	100.0%	70.5%	68.7%
Grass/Pasture	37.1%	40.4%	-	29.5%	31.3%

12 fields, 145 acres in Yates County, NY

TOWNSHIP/SECTION



Field 8

10 ac



2014



2013



2012



2011



2010

Grass/Pasture	57.2%	62.0%	27.8%	75.0%	52.0%
Non-Agricultural	42.8%	38.0%	69.9%	24.2%	48.0%
Other	–	–	2.4%	0.7%	–



Field 9

98 ac



2014



2013



2012



2011



2010

Non-Agricultural	91.2%	90.7%	97.3%	92.8%	95.4%
Grass/Pasture	8.7%	9.2%	2.7%	5.4%	4.3%
Other	0.1%	0.1%	–	1.8%	0.4%



Field 10

9 ac



2014



2013



2012



2011



2010

Non-Agricultural	43.9%	38.8%	94.1%	60.3%	64.3%
Grass/Pasture	56.1%	61.2%	5.9%	39.7%	35.7%

12 fields, 145 acres in Yates County, NY

TOWNSHIP/SECTION



Field 11

4 ac



2014



2013



2012

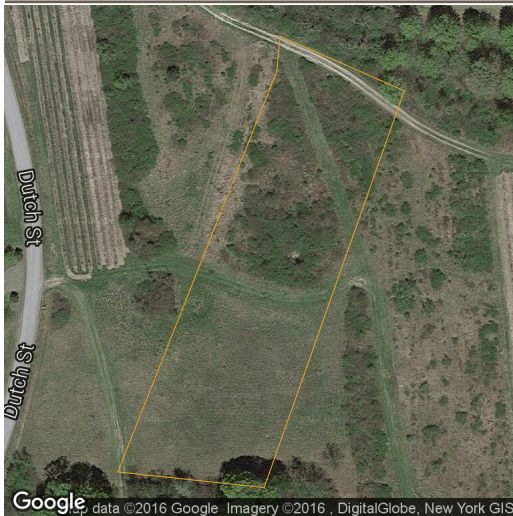


2011



2010

	2014	2013	2012	2011	2010
Grass/Pasture	59.6%	63.3%	43.6%	25.5%	35.3%
Non-Agricultural	26.9%	36.7%	56.4%	42.2%	60.0%
Grapes	13.5%	–	–	22.5%	–
Corn	–	–	–	9.8%	–
Other	–	–	–	–	4.7%



Field 12

2 ac



2014



2013



2012



2011



2010

	2014	2013	2012	2011	2010
Grass/Pasture	47.4%	91.2%	–	33.3%	29.8%
Non-Agricultural	52.6%	8.8%	100.0%	66.7%	70.2%

Source: NASS Cropland Data Layer